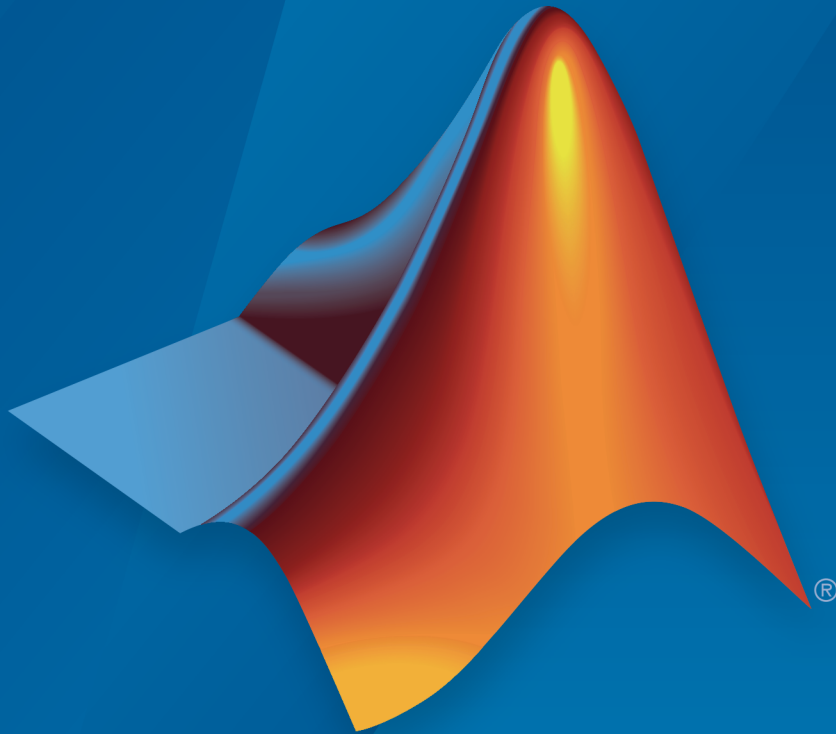


MATLAB[®] Report Generator[™] Release Notes



MATLAB[®]

How to Contact MathWorks



Latest news: www.mathworks.com
Sales and services: www.mathworks.com/sales_and_services
User community: www.mathworks.com/matlabcentral
Technical support: www.mathworks.com/support/contact_us



Phone: 508-647-7000



The MathWorks, Inc.
3 Apple Hill Drive
Natick, MA 01760-2098

MATLAB[®] Report Generator[™] Release Notes

© COPYRIGHT 2002–2017 by The MathWorks, Inc.

The software described in this document is furnished under a license agreement. The software may be used or copied only under the terms of the license agreement. No part of this manual may be photocopied or reproduced in any form without prior written consent from The MathWorks, Inc.

FEDERAL ACQUISITION: This provision applies to all acquisitions of the Program and Documentation by, for, or through the federal government of the United States. By accepting delivery of the Program or Documentation, the government hereby agrees that this software or documentation qualifies as commercial computer software or commercial computer software documentation as such terms are used or defined in FAR 12.212, DFARS Part 227.72, and DFARS 252.227-7014. Accordingly, the terms and conditions of this Agreement and only those rights specified in this Agreement, shall pertain to and govern the use, modification, reproduction, release, performance, display, and disclosure of the Program and Documentation by the federal government (or other entity acquiring for or through the federal government) and shall supersede any conflicting contractual terms or conditions. If this License fails to meet the government's needs or is inconsistent in any respect with federal procurement law, the government agrees to return the Program and Documentation, unused, to The MathWorks, Inc.

Trademarks

MATLAB and Simulink are registered trademarks of The MathWorks, Inc. See www.mathworks.com/trademarks for a list of additional trademarks. Other product or brand names may be trademarks or registered trademarks of their respective holders.

Patents

MathWorks products are protected by one or more U.S. patents. Please see www.mathworks.com/patents for more information.

R2017a

Single-File HTML Output: Generate a report as a single HTML file	1-2
Embedded Style Sheet: Convert HTML document containing style sheets to Microsoft Word and PDF	1-2
Page Break Component: Insert page breaks in template-based Microsoft Word and PDF reports	1-2
White-Space Options: Use spaces and line feeds to format code and other text in reports	1-2

R2016b

Report Forms: Use the Report Explorer and Microsoft Word, PDF, or HTML templates to create form-based reports ..	2-2
PDF Image Maps: Add hyperlinks to images in PDF reports	2-2
PDF Watermarks: Add watermarks to PDF reports	2-2
Collapsible Table of Contents: Hide table of contents in HTML reports	2-3
Simplified Table Creation: Create tables using MATLAB tables and categorical arrays	2-3

Report Components: Add a line break	2-3
Conversion Templates: Create nested numbered sections ..	2-3
PDF Fonts: System fonts detected for PDF output	2-3
Noto Fonts: New fonts supported for non-English PDF reports	2-4
Subdocuments in DOM Reports: Use <code>docview</code> function to unlink subdocuments	2-4
Diff and Merge: Reuse open MATLAB sessions for diff and merge from external source control tools	2-5

R2016a

Scalable Report Generation: Generate PDF reports as big as 10,000 pages	3-2
Table of Contents: Add TOCs programmatically	3-3
Page Numbers: Create page number placeholders programmatically	3-3
HTML Text Component: Convert HTML to Word or PDF ...	3-3
<code>pptview</code> Function: Open PowerPoint presentation or convert it to PDF	3-3
Cross-Platform PDF Viewer: View PDF with built-in viewer	3-3
Functionality Being Removed or Changed	3-4

R2015b

Programmatic interface for adding content to PowerPoint presentations	4-2
DOM API object display options	4-2
DOM API horizontal rule	4-2

R2015a

Support for appending HTML string or file to a Word or PDF report generated by the Document Object Model (DOM) API	5-2
Single-file output option for HTML reports generated by DOM API	5-2
Simplified table formatting with DOM API	5-3
Container for generating high-level HTML elements	5-3
Images and text for DOM report links	5-3

R2014b

Report formatting based on Word and HTML templates . . .	6-2
MATLAB report objects for creating report scripts	6-2
Fast file converter with reduced memory requirements . . .	6-2
Zipped package option for HTML reports	6-3

Fill-in-the-blanks Word and HTML forms for generating reports	6-3
Color settings preferences in MATLAB Comparison Tool ..	6-3

R2014a

OpenOffice support	7-2
---------------------------------	------------

R2013b

Bug Fixes

R2013a

Bug Fixes

R2012b

Non-English character set report formats	10-2
---	-------------

R2012a

Enhanced Table Components	11-2
Title Page Formatting Enhancements	11-3
Text Component Supports Subscripts and Superscripts ..	11-3

R2011b

Full Page Image Option for PDF Reports	12-2
Include Legal Notice, Report Creation Date, and Copyright on the Title Page	12-2

R2011a

Improved PDF Pagination	13-2
Export XML Comparison Results to the Workspace	13-2

R2010b

Complete Text Included in Reports	14-2
Linking to MATLAB Commands	14-2
Insert Variable Component Enhancements	14-2

Nest Setup File Component Supports Relative Links	14-2
Enhanced Error Handling Code for Evaluate MATLAB Expression Component	14-2
Transposable Columns for Handle Graphics Summary Table Component	14-2
Additional Date Format for Title Page Component	14-3
Improved XML Comparison Report	14-3

R2010a

Bug Fixes

R2009b

Style Sheets and Style Sheet Data Items Now Alphabetized	16-2
Improved Images in Word and RTF Reports on Windows Platforms	16-2
Required Products Information for MATLAB/Toolbox Version Number Component	16-2
Adobe Illustrator Image File Format No Longer Supported	16-2
Navigation Controls for XML Comparison Report	16-3

R2009a

No New Features or Changes

R2008b+

Comparison of XML Files 18-2

R2008b

Bug Fixes

R2008a

Bug Fixes

R2007b

**Text Formatting Options for Title Page, Text, and Paragraph
Components 21-2**

R2007a

Bug Fixes

R2006b

Bug Fixes

R2006a+

Bug Fixes

R2006a

User Interface and Performance Enhanced	25-2
XML File Format Changed	25-2

R14SP3

Style Sheets Modify PDF Headers and Footers	26-2
--	-------------

Stylesheet Editor	27-2
Table Cell Spanning	27-2
Generating Microsoft Word Documents as .doc Files	27-2
Improved Graphical User Interface	27-3

R2017a

Version: 5.2

New Features

Bug Fixes

Single-File HTML Output: Generate a report as a single HTML file

In Report Explorer, you now can generate an HTML report as a single file by selecting **Single-file HTML (from template)** or **Single-file HTML** as the file output format. The single file contains all the document content, including text, images and style sheet. You can continue to obtain an HTML report as a zipped or unzipped folder of separate HTML documents. For the folder option, use **HTML (from template)** or **HTML** as the file output format.

Embedded Style Sheet: Convert HTML document containing style sheets to Microsoft Word and PDF

Word and PDF reports preserve the HTML styles defined in the head element of an HTML document. Preserving the HTML styles ensures that both the original HTML document and the generated report use the same formatting.

Page Break Component: Insert page breaks in template-based Microsoft Word and PDF reports

You now can add a page break in your report setup file using the Report Explorer. The component library includes a **Page break** component under **Formatting**. When you insert a **Page break**, the sections or subsections start on new pages in **.docx** (Word (from template)) PDF (from Word template), and **Direct PDF** (from Template)) reports.

White-Space Options: Use spaces and line feeds to format code and other text in reports

In the **Paragraph** and **Text** components dialog boxes, a **Preserve white space** format option replaces the **Retain spaces and carriage returns** and **Show text as syntax-highlighted MATLAB code** options. You can now preserve white space, such as spaces and line feeds, in proportionally spaced text. Two new components, **Code** and **Preformatted**, replace the formatting options previously provided in the **Paragraph** component. Both of these new components preserve white space and default to monospace font. The **Code** component differentiates inline code from other paragraph text. The **Preformatted** component preserves white-space formatting in a program listing.

R2016b

Version: 5.1

New Features

Bug Fixes

Compatibility Considerations

Report Forms: Use the Report Explorer and Microsoft Word, PDF, or HTML templates to create form-based reports

You can now use the Report Explorer to create form-based reports. Forms help you to build a report based on a template, simplifying the creation of your report setup. Your template can contain holes that you can fill with content (such as text and tables) or with subforms. You can fill a hole in a subform with another subform. For more information, see Form-Based Reports.

For PDF and Word output types, each subform can contain a page layout, which can include a header, a footer, as well as page layout information. Each of these parts of the layout can contain holes that you can fill. For example, you can fill a hole in a header with the name of a chapter.

You can also use a subform in a loop to fill the form with content from each iteration.

Report Explorer comes with default templates that include holes, such as a title page, chapter titles, and header and footers. To create a form-based report, in the Report Explorer, select **File > New Form**. The components associated with creating form-based reports appear in the component library under **Form-Based Reporting**.

PDF Image Maps: Add hyperlinks to images in PDF reports

PDF output now supports image maps. In previous releases, only HTML output supported image maps. To see the approach for creating image maps, see Create Image Maps.

PDF Watermarks: Add watermarks to PDF reports

You can add a watermark to a PDF report. A watermark is an image that appears in the background of a page. For example, a watermark can contain the word Draft or Confidential. It runs behind the text on each page you apply it to. Add the watermark in a PDF page layout using the Report Explorer or the DOM API.

In the API, use a `mlreportgen.dom.Watermark` object to create the watermark based on a `.bmp`, `.jpg`, `.png`, `.svg`, or `.tiff` image. Assign it to the `Watermark` property of an `mlreportgen.dom.PDFPageLayout` object.

In Report Explorer, use the PDF Page Layout component to specify the watermark image file name.

Collapsible Table of Contents: Hide table of contents in HTML reports

In HTML reports that contain a table of contents, you can now expand and collapse the TOC structure. For the file output format, select `HTML (from template)` before you generate the report. Expand or collapse each node by clicking the plus or minus sign on the node. Press `Ctrl+click` to expand or collapse the entire structure.

Simplified Table Creation: Create tables using MATLAB tables and categorical arrays

You can now use MATLAB[®] categorical arrays as values for creating tables. You can use this data type when creating `mlreportgen.dom.Table` and `mlreportgen.dom.FormalTable` objects and with the `mlreportgen.dom.Document.append` method.

The `mlreportgen.dom.MATLABTable` class has also been added. Use it to create a DOM object that represents a MATLAB table in a report using MATLAB formatting of tables.

Report Components: Add a line break

You can now add a line break in your report setup file using the Report Explorer. The component library includes a Line Break component for this purpose, under the Formatting components. You can add a `Line Break` component as a child of a `Paragraph` component or a `Table Entry` component.

Conversion Templates: Create nested numbered sections

Numbered sections can now include nested numbered sections. For each output type, you can select a template that supports this formatting. Nested numbered sections render with a number for each subsection. Previously, only the number for the top level of a section appeared in the report. For the file format for the report you are generating, select one of the `(from template)` options. Select `Default Numbered` from the template list, or create your own template based on this template.

PDF Fonts: System fonts detected for PDF output

You can now specify any font installed on your system for use in PDF reports without additional configuration for MATLAB Report Generator[™]. In previous releases, you

had to configure your Report Generator setup to detect these fonts. PDF font detection applies to reports created using the Report Explorer and the DOM API.

Noto Fonts: New fonts supported for non-English PDF reports

In 2016b, you can use Google® Noto fonts to produce PDF reports in languages that require non-English characters, such as Japanese, Korean, or Cyrillic. Noto font support applies to reports generated by the Report Explorer and the DOM API.

- 1 Download the Noto Sans font that supports your language.
- 2 Install the font to one of these folders. On Linux®:
 - `$user/.fonts`, where `$user` is your home directory
 - `/usr/local/fonts`
 - `/usr/share/fonts`
 - `/usr/X11R6/lib/X11/fonts`

On Windows®:

- `$windir\Fonts`, where `$windir` is the Windows directory, for example, `C:\Windows`

On a Mac:

- `$usr/Library/Fonts/`, where `$usr` is your home directory
 - `/Library/Fonts/`
 - `/System/Library/Fonts/`
 - `/Network/Library/Fonts/`
- 3 Update the language font map to set the new font as the default for Report Explorer, or specify the font in your template for DOM output. To update the language font map, see [Configure PDF Fonts](#).

Subdocuments in DOM Reports: Use `docview` function to unlink subdocuments

On Windows systems, you can remove links to subdocuments from the report document and instead include that content in the master document. With the `docview` function, use the `'unlinkdocxsubdoc'` option.

Diff and Merge: Reuse open MATLAB sessions for diff and merge from external source control tools

Save time by using open MATLAB sessions for XML comparison and merge of Simulink® models from your external source control client.

Compatibility Considerations

In previous releases, you could use the `fileComparisonDriver` function to customize external source control tools, but you could not reuse open MATLAB sessions. The `fileComparisonDriver` will be removed in a future release. Instead, use the instructions here: [Customize External Source Control to Use MATLAB for Diff and Merge](#).

R2016a

Version: 5.0

New Features

Bug Fixes

Scalable Report Generation: Generate PDF reports as big as 10,000 pages

In previous releases, the DOM API used Microsoft® Word to generate PDF documents from Word documents. In R2016a, the DOM API generates PDF documents directly. The direct-to-PDF capability allows you to programmatically generate large PDF documents on all platforms supported by MATLAB. This release also adds a new output type to Report Explorer, `Direct PDF (from template)`, based on the direct-to-PDF capability. The new output type speeds up PDF generation and expands and simplifies PDF formatting.

Direct-to-PDF allows you to use an HTML template to specify the fixed content and format of a report and holes for inserting generated content. The template can use a predefined set of HTML tags to specify a report's page layout, table of contents location, and the content of page headers and footers. You can also programmatically specify page layout, table of contents location, and page headers and footers. The DOM API automatically generates table of contents and page numbers. See [Create an HTML or PDF Template](#).

See these new classes associated with the new PDF capability in the DOM API:

- `mlreportgen.dom.StyleRef`

Use this class to create running page headers and footers in Word and PDF documents. See [Create Running Page Headers and Footers](#)

- `mlreportgen.dom.PDFPageLayout`
- `mlreportgen.dom.PDFPageHeader`
- `mlreportgen.dom.PDFPageFooter`
- `mlreportgen.dom.Page`
- `mlreportgen.dom.NumPages`
- `mlreportgen.dom.CSSProperty`
- `mlreportgen.dom.CSSProperties`
- `mlreportgen.dom.FOProperty`
- `mlreportgen.dom.FOProperties`
- `mlreportgen.dom.PageRef`
- `mlreportgen.dom.Heading1`
- `mlreportgen.dom.PageBreak`

-
- `mlreportgen.dom.Leader`
 - `mlreportgen.dom.ListStyleType`

Table of Contents: Add TOCs programmatically

In R2016a, you can create a placeholder for a table of contents in your DOM API report program. Use the `mlreportgen.dom.TOC` class to create the placeholder. For more information on creating a table of contents, see [Create a Table of Contents](#).

Page Numbers: Create page number placeholders programmatically

In R2016a, you can create page number placeholders programmatically in Word and PDF reports. Previously you used only a template to create the placeholders. Updating a Word document replaces the placeholders with automatically generated page numbers. Closing a PDF DOM document similarly replaces the placeholders with automatically generated page numbers. For more information, see the `mlreportgen.dom.Page` class.

HTML Text Component: Convert HTML to Word or PDF

The new HTML Text component allows you to include HTML markup in a Report Explorer report. If you specify Word or PDF as the report output type, the included HTML text is converted to Word or PDF. The conversion preserves the text's HTML-specified format. You can enter the HTML text in the component or specify a file or workspace variable that contains the text.

pptview Function: Open PowerPoint presentation or convert it to PDF

The `pptview` function opens a PPT presentation in PowerPoint® on Windows or Apache OpenOffice™ on Linux. If you have Microsoft Office installed, you can also use this function to convert a PowerPoint presentation to PDF format.

Cross-Platform PDF Viewer: View PDF with built-in viewer

Previously, the Report Generator displayed PDF reports in Adobe® Acrobat® on Windows and in the PDF viewer you specified on other platforms. In R2016a, the Report Generator displays PDF reports on the same built-in viewer on all platforms. This change avoids the need for you to interact with a new Acrobat security dialog box on Windows every time you display a report. You also do not need to set up a viewer on Linux and Macintosh systems.

Note: The new PDF viewer does not display a report's bookmarks.

Functionality Being Removed or Changed

Functionality	Result	Use Instead	Compatibility Considerations
<code>mlreportgen.dom.DOCXPage</code> class	Still works for Microsoft Word output	<code>mlreportgen.dom.Page</code>	To prevent your code from being output dependent, replace instances of <code>DOCXPageMargins</code> with <code>PageMargins</code> .
<code>mlreportgen.dom.DOCXPage</code> class	Still works for Word output	<code>mlreportgen.dom.Page</code>	Replace instances of <code>DOCXPageSize</code> with <code>PageSize</code> .
<code>mlreportgen.dom.DOCXRaw</code> class	Still works for Word output	<code>mlreportgen.dom.Page</code>	Replace instances of <code>DOCXRawFormat</code> with <code>PageRawFormat</code> .
<code>mlreportgen.dom.DOCXSection</code> class	Still works for Word output	<code>mlreportgen.dom.DOCXSection</code> or <code>mlreportgen.dom.PDFPageLayout</code>	Replace instances of <code>DOCXSection</code> with <code>DOCXPageLayout</code> . If appropriate, add a <code>PDFPageLayout</code> object.
<code>CurrentDOCXSection</code> property	Still works for Word output	<code>CurrentPageLayout</code>	Replace instances of <code>CurrentDOCXSection</code> property with <code>CurrentPageLayout</code> property.

R2015b

Version: 4.2

New Features

Bug Fixes

Programmatic interface for adding content to PowerPoint presentations

You can use the PPT (PowerPoint) API to add generated content to an existing PowerPoint presentation or to create a complete PowerPoint presentation programmatically. Your presentation can capture dynamic information from a MATLAB program without you making manual updates to the presentation. To format the layout and general look of your presentation, use template slide masters, style layouts, and styles. To format specific presentation content, you can use the PPT API format objects and properties.

For examples of PPT API code, see:

- Update Presentation Content Programmatically
- Create a Presentation Programmatically

DOM API object display options

For Microsoft Word reports, you can use an `mlreportgen.dom.Display` object to specify whether to display an `mlreportgen.dom.Text` object. For HTML reports, you can use a `Display` object to specify the how to display DOM objects such as text, paragraphs, images, list items. For HTML reports, some display options are:

- Display as an inline or block element.
- Display the element similar to a table column, table caption, list element, or a few other elements.
- Suppress the display of the object.

For details, see `mlreportgen.dom.Display`.

DOM API horizontal rule

You can use an `mlreportgen.dom.HorizontalRule` object to specify a horizontal line to visually divide report content.

For details, see `mlreportgen.dom.HorizontalRule`.

R2015a

Version: 4.1

New Features

Bug Fixes

Support for appending HTML string or file to a Word or PDF report generated by the Document Object Model (DOM) API

You can append HTML markup or the contents of a whole HTML file to a programmatic report written with the Document Object Model (DOM) API to:

- Convert an existing HTML report to a Microsoft Word or PDF report.

You can append the HTML markup for a report to a DOM report, which you can then generate in Word or PDF format. For example, you can use a MATLAB `printf` statement to generate an HTML report file, and then append that HTML file to a DOM report to generate a PDF or Word version of the report. Another example is to convert a report generated by Model Advisor from HTML to Word or PDF.

- Add content based on HTML markup.

You can append the HTML code for a report to a DOM report, using the HTML code as a building block in a DOM report that includes other report elements.

Perform these steps to append HTML to a DOM report.

- 1 Ensure that the HTML code complies with HTML standards, such as including beginning and end tags (for example, `<p>` and `</p>`). Consider using a utility such as HTML Tidy.
- 2 In a DOM report, use `addHTML` to append HTML code or `addHTMLFile` to append an HTML file to a document or document part.

For example, this DOM code creates a Word report that displays `Hello World`, based on the HTML code that you append to the report.

```
import mlreportgen.com.*;
d = Document('MyReport', 'docx');
addHTML(d, '<p style="color:blue"><b>Hello World</b></p>');
```

For information about using the `addHTML` or `addHTMLFile` methods, see `mlreportgen.dom.Document.addHTML` or `mlreportgen.dom.Document.addHTMLFile`.

Single-file output option for HTML reports generated by DOM API

To simplify display of an HTML report, you can specify that the DOM API generate the report as a single HTML file that includes the report images.

Specify 'html-file' for the `type` input argument for a `Document` or `DocumentPart` constructor. For details, see the `mlreportgen.dom.Document` reference page.

Simplified table formatting with DOM API

In R2015a, the DOM API includes several enhancements to simplify creating and formatting tables.

- You can use an `mlreportgen.dom.ResizeToFitContents` format object in the `Style` property for `mlreportgen.dom.Table` or `mlreportgen.dom.FormalTable` objects. The `ResizeToFitContents` specifies whether to resize columns to fit the widest content in a column.
- You can specify an `mlreportgen.dom.Height` format object in the `Style` property of an `mlreportgen.dom.TableEntry` object. The height of a row is the tallest height specified for a table entry in that row. If no entries in the row specify a height, then the row height is specified by the `Height` property of the `TableRow` object.
- Table entries can now inherit the border formatting specified in a `TableEntriesStyle` property of `mlreportgen.dom.Table` or `mlreportgen.dom.Table` objects.

Container for generating high-level HTML elements

You can use the `mlreportgen.dom.Container` class to create high-level HTML elements not otherwise supported by the DOM API, such as `div`, `section`, or `article`.

You can also use a `Container` object to simulate format inheritance in Word reports.

For details, see `mlreportgen.dom.Container`.

Images and text for DOM report links

You can append text and images to `mlreportgen.dom.ExternalLink` and `mlreportgen.dom.InternalLink` objects.

For details, see `mlreportgen.dom.ExternalLink.append`.

R2014b

Version: 4.0

New Features

Bug Fixes

Report formatting based on Word and HTML templates

You can use Microsoft Word or HTML templates for reports that you create using:

- The Report Explorer. For details, see [Generate a Report Using a Template](#).
- MATLAB report objects. See [Document Object Model](#).

MATLAB report objects for creating report scripts

You can use the DOM (Document Object Model) API to create MATLAB programs to generate reports. The DOM API provides a set of objects for creating text, paragraphs, tables, images, lists, and other kinds of report content. When you create a report program, you can:

- Produce Microsoft Word, HTML, and PDF output using the same code.
- Specify formatting for report objects, such as color and bold for text objects.
- Use format objects (for example, `Bold` and `FontFamily`) to format report objects.
- Add MATLAB data directly to report objects (for example, a `char` array to a `Text` object).
- Use formatting and fixed content that is defined in a Word or HTML template.
- Create form-based reports that contain fixed and generated content.
- Modularize a report into parts for generation of reports that have repetitive elements of the same format.

For information about how to create report programs, see [Document Object Model](#).

Fast file converter with reduced memory requirements

Generate template-driven reports much faster than in previous releases, without using Java memory.

To take advantage of these performance advantages, use one of these **File format** report options:

- HTML (from template)
- PDF (from template)
- Word (from template)

For details, see Report Generation Using Templates.

Zipped package option for HTML reports

You can use a zip file to package reports that use an HTML template. Zip file packaging compresses and consolidates the files. You can also package the HTML files as unzipped files or as both zipped and unzipped files.

Fill-in-the-blanks Word and HTML forms for generating reports

You can use the DOM (Document Object Model) report objects in a MATLAB program along with Word and HTML fill-in-the-blanks templates that contain fixed and holes to include generated content. The report program uses report objects to generate the variable information. See Form-Based Reporting.

Color settings preferences in MATLAB Comparison Tool

You can now change and save your diff color preferences for the MATLAB Comparison Tool. You can apply your color preferences when comparing text files, MAT-files, variables, zip files or folders.

R2014a

Version: 3.16

New Features

Bug Fixes

OpenOffice support

On Linux and Macintosh platforms, the report output appears in Apache OpenOffice if you:

- Set **File format** to either **Word Document (RTF)** or **Rich Text Format**
- Enable **View report generation**

In the MATLAB Report Generator Preferences, the **View command** preference default now enables viewing the report in OpenOffice for Linux and Macintosh platforms.

For details, see Report Output Format and Stylesheet.

R2013b

Version: 3.15

Bug Fixes

R2013a

Version: 3.14

Bug Fixes

R2012b

Version: 3.13

Bug Fixes

Non-English character set report formats

The MATLAB Report Generator provides basic PDF font support for:

- English
- Japanese
- Korean
- Russian (Cyrillic)

You can use the language font map to:

- Add or modify specifications for PDF font usage for supported non-English languages.
- Create PDF font support for a non-supported language.
- Change the default English fonts, if you do not specify a style sheet.

The language font map specifications indicate what font to use on a specific platform (for example, Windows) for basic report elements such as body text. For details, see PDF Fonts for Non-English Platforms.

R2012a

Version: 3.12

New Features

Bug Fixes

Compatibility Considerations

Enhanced Table Components

You can use the following new components to create and format a table:

- Table
- Table Column Specification
- Table Header
- Table Body
- Table Footer
- Table Row
- Table Entry

Formatting options that the Table component and its child components support include:

- Text color and alignment
- Row background colors
- Inclusion of images
- Inclusion of hyperlinks
- Table cells spanning columns and rows

You can conditionally control the content or format of a table.

For more information, see [Table Formatting Components](#).

Compatibility Considerations

Releases earlier than R2012a included a different Table component. Starting in R2012a, that component is now called the Array-Based Table component.

The Array-Based Table component produces the same output, and has the same properties, as it did when it was called the Table component. The Array-Based Table component converts a rectangular array into a table and inserts the table into the report.

If a report that was created in a previous release already includes a Table component, the output is the same as in previous releases. To change property values for that component in R2012a or later, use the Array-Based Table dialog box.

Title Page Formatting Enhancements

For PDF and HTML reports, you can use the Stylesheet Editor to position title page elements (for example, title, copyright, and images) anywhere on the front or reverse side of the title page in any order. You can specify the size, color, weight, and slant of text elements.

For details, see [Modify Title Page Properties](#).

Text Component Supports Subscripts and Superscripts

You can include a subscript or superscript in a paragraph, using a Text component.

R2011b

Version: 3.11

New Features

Bug Fixes

Full Page Image Option for PDF Reports

To display full-page images in PDF reports, set the **Paper orientation** property to the new **Full page image (PDF only)** option. The following components provide this new option:

- Axes Snapshot
- Figure Snapshot

The Image component has a **Full page image (PDF only)** check box, which provides the same functionality as the **Full page image (PDF only)** property option.

Include Legal Notice, Report Creation Date, and Copyright on the Title Page

The Title Page component includes a new **Display legal notice on title page** check box. Use this option to include the legal notice, report creation date, and copyright information on the title page of reports that use PDF or Microsoft Word format.

R2011a

Version: 3.10

New Features

Bug Fixes

Improved PDF Pagination

Reports generated using PDF output format produce better pagination, including:

- Section titles are on the same page as the associated text (now section titles cannot appear as orphans at the bottom of a page).
- Captions are on the same page as their associated images.

Export XML Comparison Results to the Workspace

You can now export XML comparison results to the MATLAB base workspace. You can use the results data for tasks such as further analysis or incorporating into different reports.

For details, see [Export Results to the Workspace](#) in the MATLAB Report Generator User's Guide.

R2010b

Version: 3.9

New Features

Bug Fixes

Complete Text Included in Reports

Any component that displays text in reports now displays the whole text, without any truncation.

Linking to MATLAB Commands

Using the Link component, in a report you can now include a link that executes a MATLAB command.

Insert Variable Component Enhancements

The Insert Variable component includes several new options for specifying the content that the component displays and the table layout that the component uses.

Nest Setup File Component Supports Relative Links

The Nest Setup File component includes a new **Link to external report is relative** option, which makes the link to the nested report a relative link. This feature facilitates including a report on a Web site.

Enhanced Error Handling Code for Evaluate MATLAB Expression Component

The Evaluate MATLAB Expression component includes enhanced error handling code that you can easily customize (for example, the error handling code can stop report generation, with or without displaying an exception). The default error handling code now supports MATLAB class exception handling, using the `evalException` variable instead of `lastError`.

Transposable Columns for Handle Graphics Summary Table Component

For the Handle Graphics Summary Table component, use the new **Transpose table** check box to change the summary table rows into columns in the generated report. Specifying this option puts the property names in the first column and the values in the other columns.

Additional Date Format for Title Page Component

The Title Page component includes an additional date format for the **Include report creation date** field: yyyy/mm/dd.

Improved XML Comparison Report

Reports for comparisons of XML files have a new faster user interface, with changed parameters displayed in a separate panel for easier review. The enhanced report now has color highlighting for new and changed items.

For details, see [Explore the XML Comparison Report](#) in the MATLAB Report Generator User's Guide.

R2010a

Version: 3.8

Bug Fixes

R2009b

Version: 3.7

New Features

Bug Fixes

Compatibility Considerations

Style Sheets and Style Sheet Data Items Now Alphabetized

When you create or modify a style sheet, the Report Explorer **Options** pane now alphabetically sorts the style sheets and the data items in each style sheet category.

Compatibility Considerations

The order in which a style sheet or data item appears in a list may have changed from the order used in previous releases.

Improved Images in Word and RTF Reports on Windows Platforms

To provide better graphics quality in reports using the Word document format or RTF (Rich Text format) on Windows platforms, the default format for Handle Graphics[®] images is now Windows metafile format. The default had been black and white TIFF.

You can control the image format using the MATLAB preferences or the MATLAB Report Generator preferences, or from snapshot components such as the Axes Snapshot component.

Compatibility Considerations

To change the image format back to the previous default of black and white TIFF, change the preferences.

Required Products Information for MATLAB/Toolbox Version Number Component

The MATLAB/Toolbox Version Number component now supports options to display information based on whether a Simulink model or Stateflow chart requires a MathWorks[™] product. This feature does not apply to reports on MATLAB or toolbox code.

Adobe Illustrator Image File Format No Longer Supported

Compatibility Considerations

The **Image file format** options for the Axes Snapshot and the Figure Snapshot components no longer include Adobe Illustrator. If you wish to integrate a MATLAB Report Generator image into Adobe Illustrator, specify an image file format supported by Adobe Illustrator, such as PDF, and then open the image file in Adobe Illustrator.

Navigation Controls for XML Comparison Report

The XML comparison report has new navigation controls to step through differences in the report. You can use the toolbar buttons or the **XML** menu to move to the next or previous group of changes.

For details, see [Explore the XML Comparison Report in the MATLAB Report Generator User's Guide](#).

R2009a

Version: 3.6

No New Features or Changes

R2008b+

Version: 3.5

New Features

Bug Fixes

Comparison of XML Files

New comparison report for pairs of XML files.

For details, see [Comparing XML Files](#) in the MATLAB Report Generator documentation.

See also the following new example: `mlxml_testplan`.

R2008b

Version: 3.4

Bug Fixes

R2008a

Version: 3.3

Bug Fixes

R2007b

Version: 3.2.1

New Features

Bug Fixes

Text Formatting Options for Title Page, Text, and Paragraph Components

This release includes new text formatting options for the Title Page, Text, and Paragraph components.

For more information, see the MATLAB Report Generator documentation.

R2007a

Version: 3.2

Bug Fixes

R2006b

Version: 3.1

Bug Fixes

R2006a+

Version: 3.0.1

Bug Fixes

R2006a

Version: 3.0

New Features

Bug Fixes

Compatibility Considerations

User Interface and Performance Enhanced

The Report Explorer interface has a number of enhancements. The **View** menu has commands to increase and decrease font size and to show the message window if it is not displayed.

MATLAB Report Generator performance has improved. Reports are often generated more rapidly and with less chance of running out of memory.

XML File Format Changed

The format of XML files has changed in V3.0 (R2006a).

Compatibility Considerations

In V3.0 (R2006a), Report Explorer and the `rptconvert` command can convert XML files produced by the report generation process in V2.3.1 (R14SP3) and previous versions. However, in V2.3.1 (R14SP3) and previous versions, Report Explorer and the `rptconvert` command cannot convert XML files produced by the report generation process in V3.0 (R2006a).

R14SP3

Version: 2.3.1

New Features

Bug Fixes

Style Sheets Modify PDF Headers and Footers

This release adds support for modifying the content of headers and footers in PDF reports. This feature is implemented using style sheet cells and cell groups. A *cell group* contains one or more style sheet cells. A *style sheet cell* is a set of values that determine the content of a particular portion of the header or footer for a page.

Two cell groups, **Header Content** and **Footer Content**, are available for PDF reports. You can use templates to specify XML code that defines the content for a header or footer.

R14SP2+

Version: 2.3

New Features

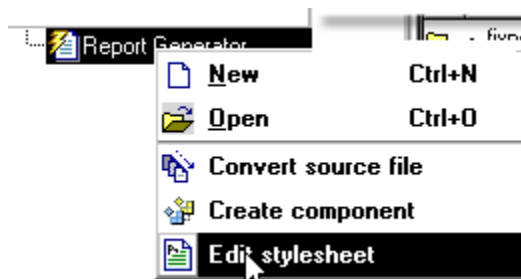
Bug Fixes

Stylesheet Editor

You can use the Stylesheet Editor to customize the formatting of your HTML, PDF, and Word documents. For example, you can specify fonts, paper layout, table presentation, as well as other characteristics of your final report.

Customizing reports by editing style sheets gives you the flexibility to create reports that conform to corporate style guidelines and requirements.

To open the Stylesheet Editor, right-click **Report Generator** in the Outline pane of the Report Explorer and then click **Edit Stylesheet** on the shortcut menu, as shown:



For more information about using the Stylesheet Editor, see [Create Custom Stylesheets](#) in the MATLAB Report Generator documentation.

Table Cell Spanning

You can create advanced table layouts for property tables. The advanced layouts include cells that span multiple rows or columns.

Generating Microsoft Word Documents as .doc Files

You can generate reports that are saved as Microsoft Word documents with the `.doc` extension. You can also convert XML source files that are generated by the report generation process to `.doc` files.

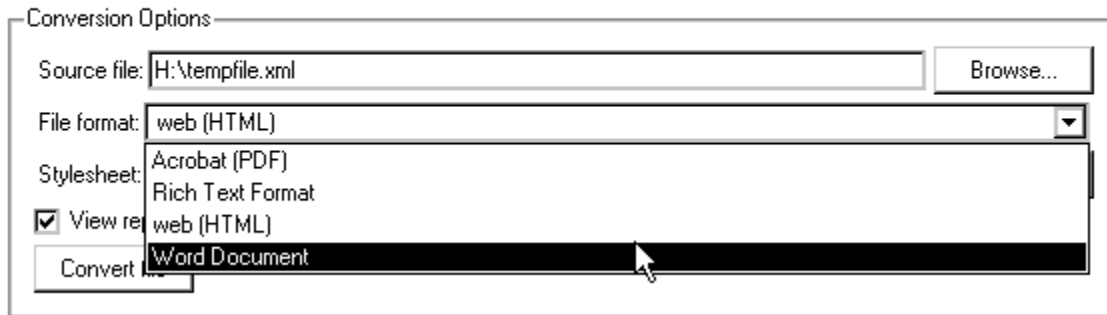
The reports you create are easier to distribute via e-mail, to share with others, and to manage.

You must have Microsoft Word software installed to use this feature, and you must be running the MATLAB Report Generator software on a Microsoft Windows system.

To use this feature select **Word Document** from the **Stylesheet** drop-down list in the Convert Source File dialog box, as shown:

Convert Source File

The Source File Converter transforms DocBook XML source files created by the Report Generator into a formatted document, such as HTML, RTF, or PDF.



Improved Graphical User Interface

This version of the MATLAB Report Generator software has the following changes and improvements to the graphical user interface:

- The File Converter has a **Source File** drop-down list. Click **Browse** to navigate to a folder to select a source file. The default folder is the current folder.
- In the File Converter, you can select a style sheet from the drop-down list and click **Edit** to open the Stylesheet Editor.
- An improved mechanism detects and displays errors that occur when you attempt to add a component that makes the style hierarchy invalid. Users of earlier versions may notice that warnings are now issued for components that had no problems in earlier versions. In this release, warning messages contain instructions about how to fix the problem.
- The **Figure Screen Capture** component has been improved to capture window decorations such as menus, title bars, and toolbars.

